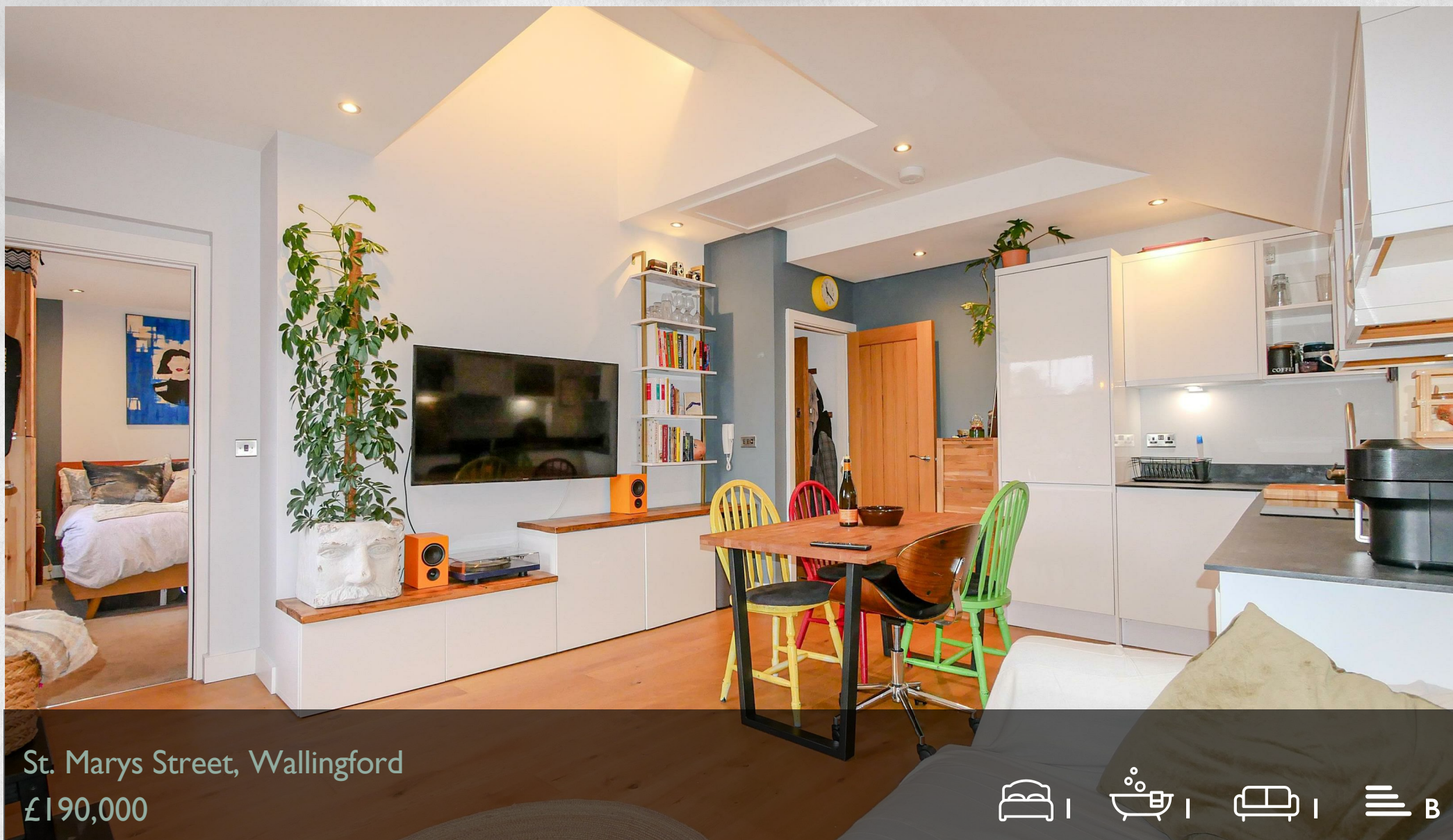


WE VALUE



YOUR HOME



St. Marys Street, Wallingford
£190,000

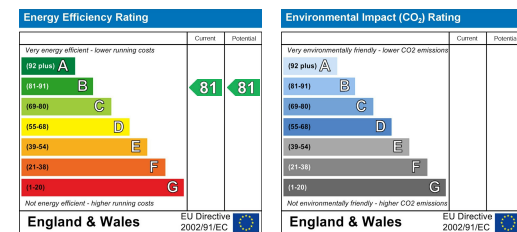


This inviting one-bedroom apartment is nestled in the heart of Wallingford, with local shops at your doorstep and charming views of the historic St. Peter's Church. The contemporary open-plan design seamlessly combines the kitchen, lounge, and dining area, complemented by integrated appliances. The double bedroom offers fitted wardrobes and an en-suite shower room, providing comfort and convenience. Perfect for first-time buyers or investors, this well-maintained apartment offers modern living amid the character and convenience of Wallingford's vibrant town centre.



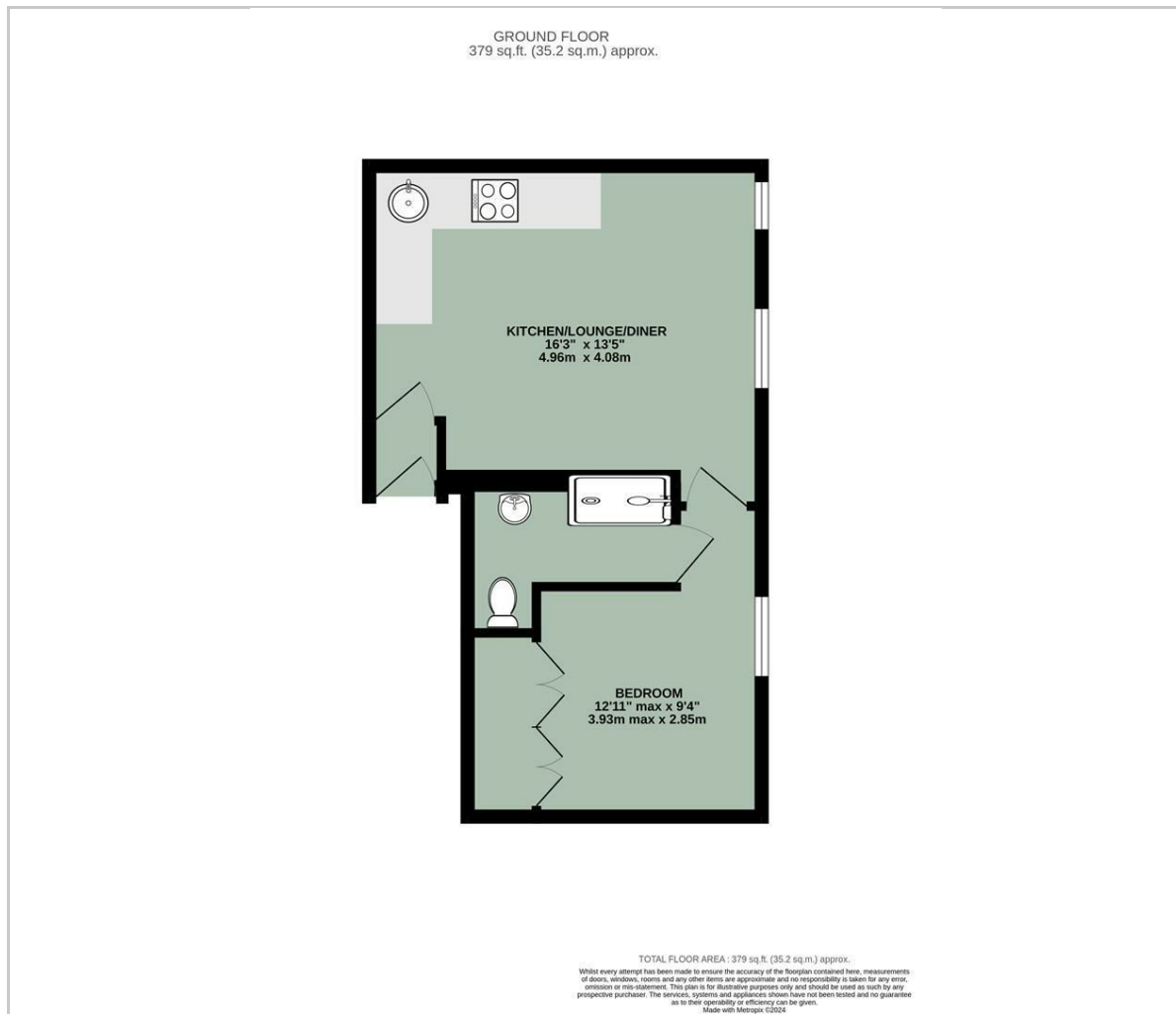


- TOWN CENTRE LOCATION
- VIEWS OF ST. PETER'S CHURCH
- MODERN OPEN PLAN KITCHEN/LOUNGE/DINER
- DOUBLE BEDROOM
- WELL-PRESENTED THROUGHOUT
- SHOWER ROOM

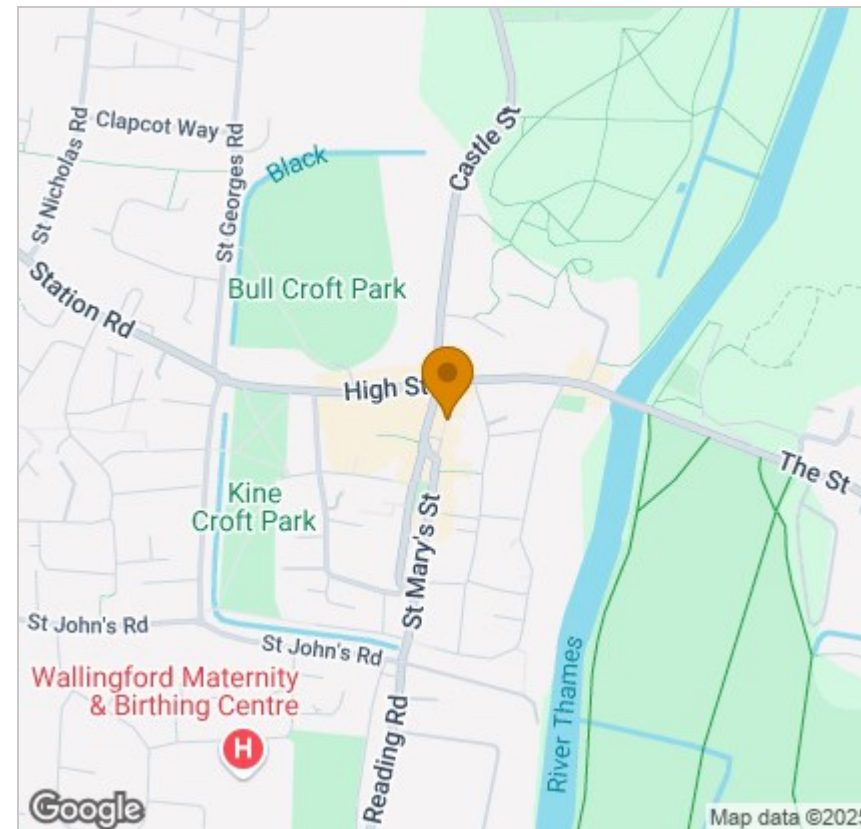


Energy Efficiency Graph

Floor Plan



Area Map



Viewing

Please contact our In House Sales & Lettings Office on 01491 839999 opt.1
if you wish to arrange a viewing appointment for this property or require further information.

These particulars, whilst believed to be accurate are set out as a general outline only for guidance and do not constitute any part of an offer or contract. Intending purchasers should not rely on them as statements of representation of fact, but must satisfy themselves by inspection or otherwise as to their accuracy. No person in this firm's employment has the authority to make or give any representation or warranty in respect of the property.

28 St Martins Street, Wallingford, Oxfordshire, OX10 0AL
Tel: 01491 839999 opt.1 Email: sales@inhouseestateagents.co.uk www.inhouseestateagents.co.uk